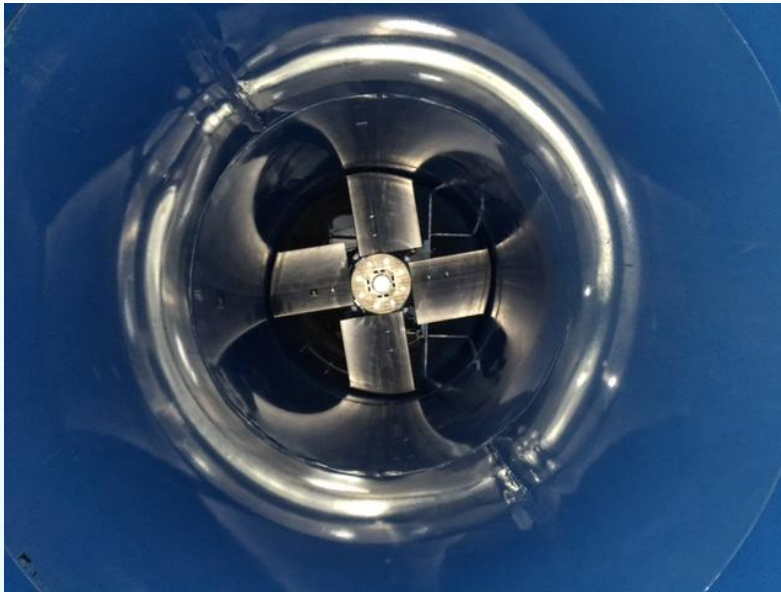


COMEFRI GROUP

Powerful Solutions in Air Movement

Industrial Axial Fans



Typical applications:

- Factory assembled cooling towers
- Field erected cooling towers
- Evaporative condensers
- Closed circuit cooling towers
- Air cooled heat exchangers
- Radiator and diesel motors
- Power generation plant
- Cement plant
- Marine & Offshore
- Industrial process
- Tunnel ventilation



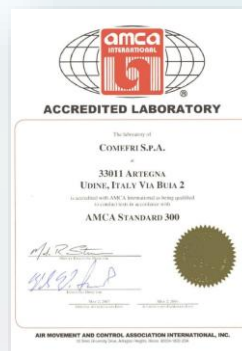
Efficient blade profile allows us to:

- Achieve higher static pressures
- Reduce tip speed
- Reduce clearance requirements with narrower blades
- Lower noise levels

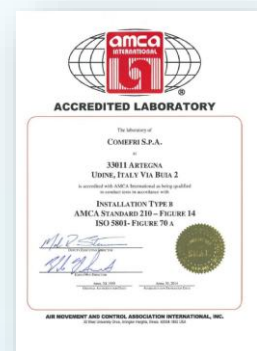
Performance testing program

All fans are tested in our AMCA certified lab, in accordance with:

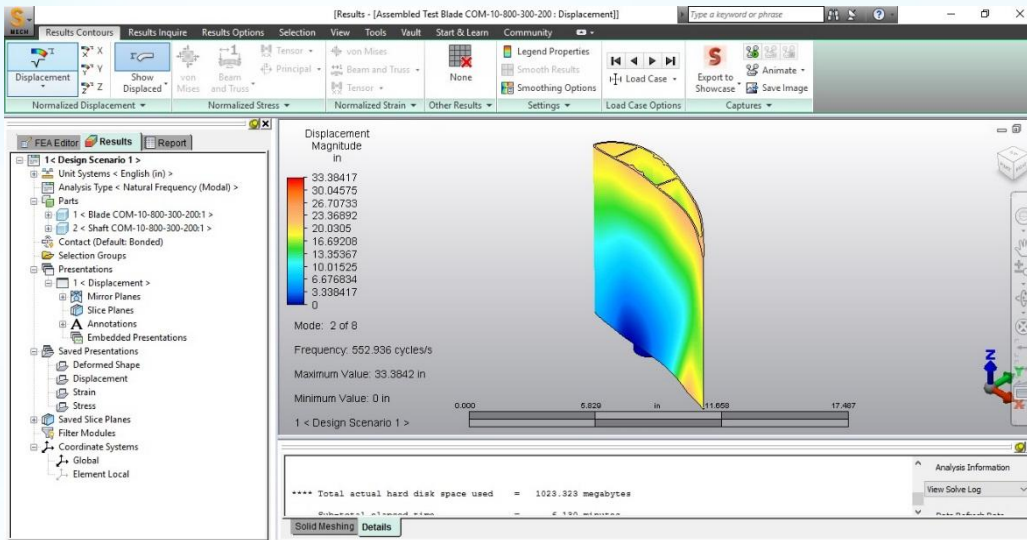
- AMCA 210
- AMCA 300



AMCA 210



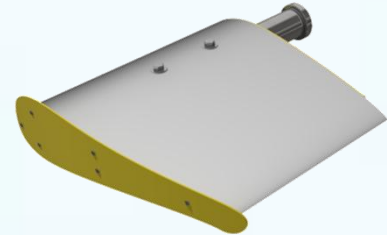
AMCA 300



Blades

Our blades are made of extruded anticorrosional aluminum alloy with two different profiles:

- COM10 profile series, for diameters of 800mm to 1600mm
- COM15 profile series, for diameters of 1800mm to 4950mm
- Blade shafts are made of galvanized carbon steel or stainless steel (optional)
- Variable pitch angles from 0° to 35°



Hubs

The two-pieces hub construction permits the selection of different numbers of blades and pitch angles to optimize the performance for your application.

The hub consists of:

- Upper and lower disc in galvanized carbon steel or stainless steel (optional)
- Set of pillow blocks in extruded aluminum alloy for housing the blade shafts.
- Bushing is galvanized carbon steel or stainless steel (optional)

Balancing

All impellers are balanced per ISO 21940-2 to Fan Application Category BV-3, Balance Quality Grade G6.3.

- Impellers greater than 2120mm in diameter the hub is dynamically balanced and the blades are statically moment balanced.

Fan Construction:

Housing:

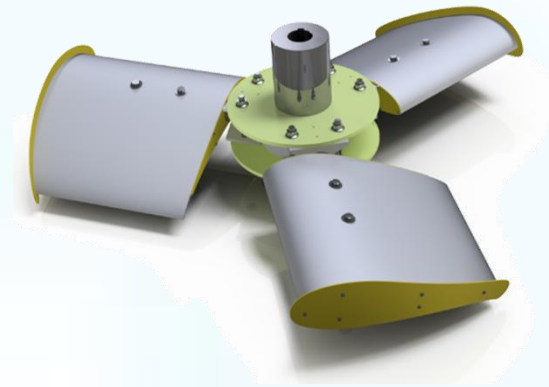
- Carbon steel epoxy painted
- Carbon steel hot dip galvanized (optional)
- Stainless steel 304 or 316L (optional)

Mounting positions:

- Horizontal
- Vertical

Accessories:

- Mounting feet
- Flexible connection with flanges
- Access door
- Inlet cone
- Outlet diffuser
- Inlet and outlet guards
- Spring or Rubber Isolators
- Belt guard
- Base frame (Arrangement 12)
- Inlet vanes
- Filtered supply air fan, Roof mounted



Hazardous duty construction:

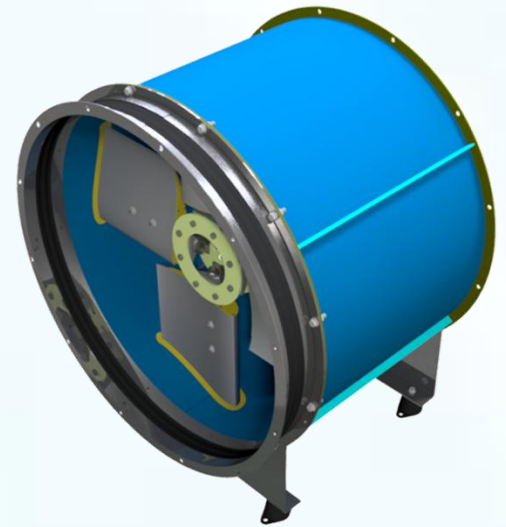
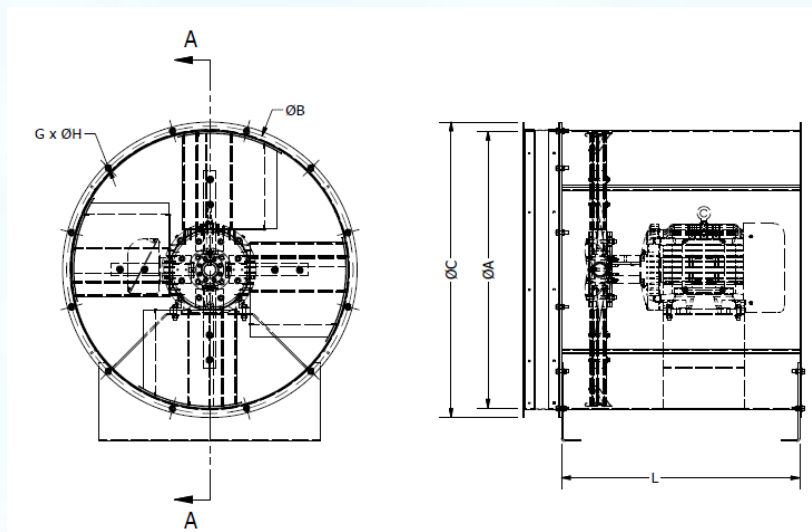
- ATEX Classification
 - Zone 1
 - Zone 2
- North American Classification
 - Class I, Div. 1
 - Class II, Div. 1
 - Class I, Div. 2

Special construction:

- Equal-rotating fans (two impellers on a double end shaft motor)
- Counter-rotating fans (two fans in series)

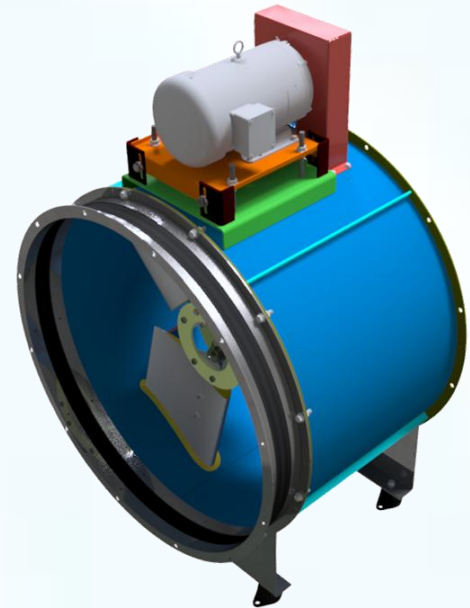
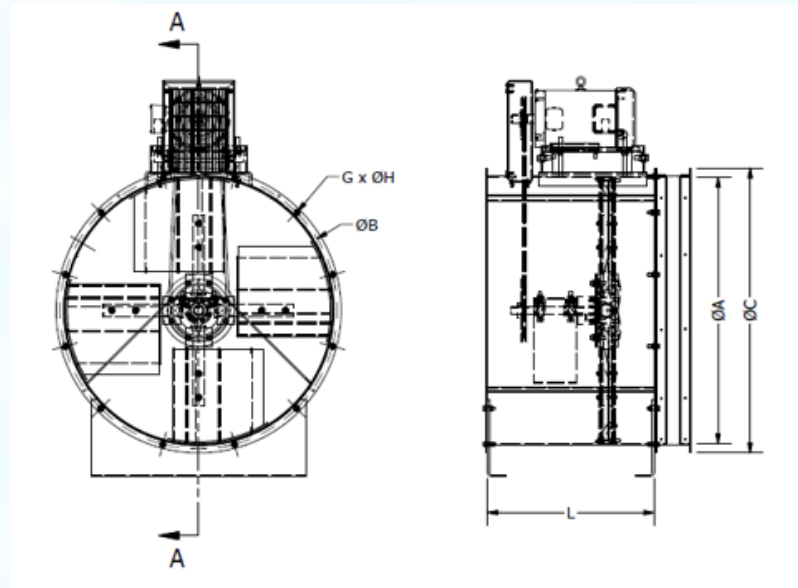
Complete assembled fan

Direct Drive – Arrangement 4



Fan size	ϕ A	ϕ B	ϕ C	G x ϕ H	L (80-132)	L (160-225)	L (250-280)
800	800	860	905	24 x ϕ 12	800	-	-
900	900	960	1005	24 x ϕ 12	800	1000	-
1000	1000	1060	1105	24 x ϕ 12	800	1000	-
1120	1120	1200	1245	24 x ϕ 16	800	1000	-
1250	1250	1330	1375	24 x ϕ 16	800	1000	1250
1400	1400	1480	1525	24 x ϕ 16	800	1000	1250
1600	1600	1680	1725	24 x ϕ 16	-	1000	1250
1800	1800	1880	1925	24 x ϕ 16	-	1000	1250
2000	2000	2080	2125	24 x ϕ 16	-	1000	1250
2120	2120	2200	2245	24 x ϕ 16	-	-	1250
2240	2240	2320	2365	24 x ϕ 16	-	-	1250

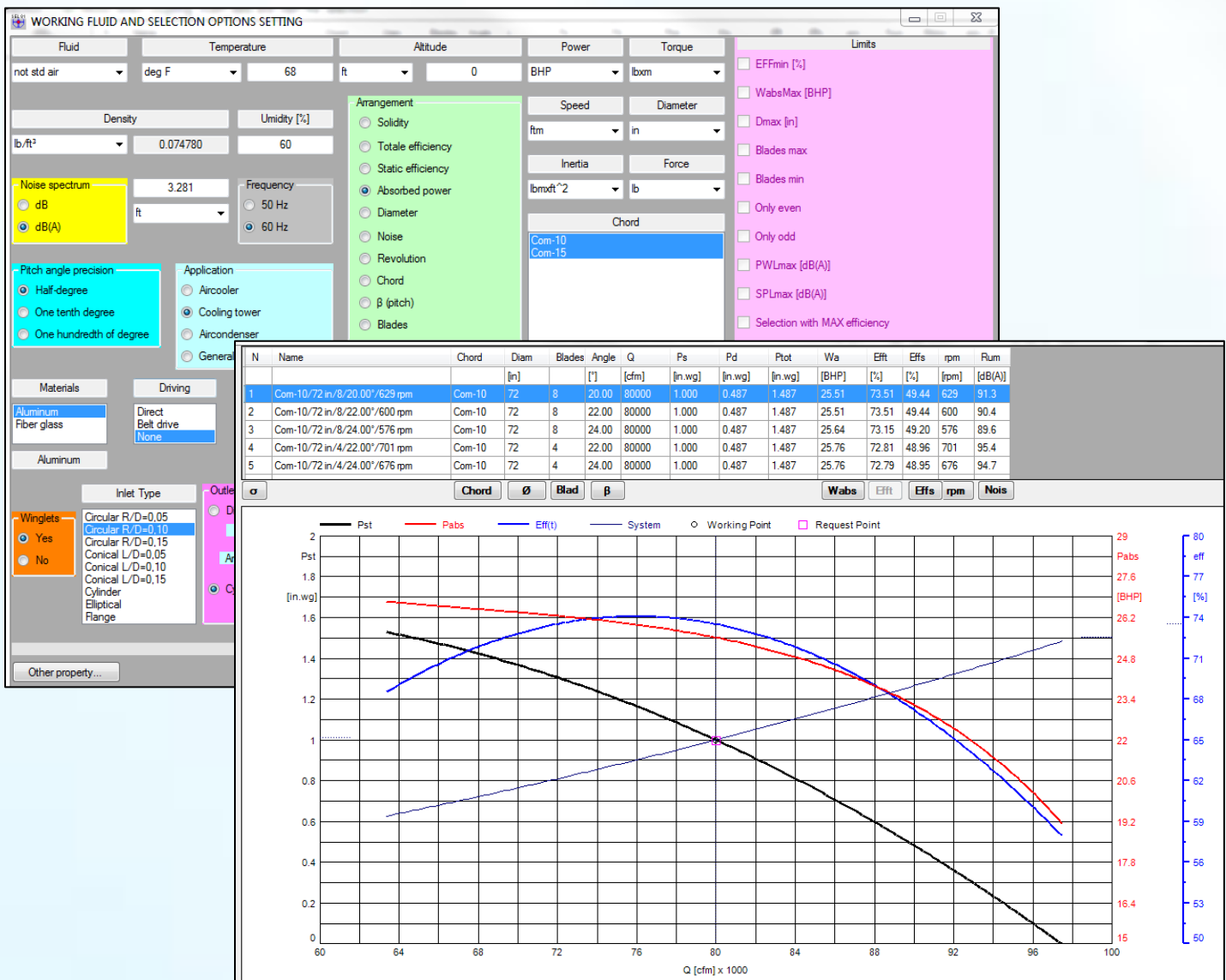
Belt Drive – Arrangement 9



Fan size	ϕ A	ϕ B	ϕ C	G x ϕ H	L max
800	800	860	905	24 x ϕ 12	1000
900	900	960	1005	24 x ϕ 12	1000
1000	1000	1060	1105	24 x ϕ 12	1120
1120	1120	1200	1245	24 x ϕ 16	1120
1250	1250	1330	1375	24 x ϕ 16	1250
1400	1400	1480	1525	24 x ϕ 16	1250
1600	1600	1680	1725	24 x ϕ 16	1250
1800	1800	1880	1925	24 x ϕ 16	1320
2000	2000	2080	2125	24 x ϕ 16	1320
2120	2120	2200	2245	24 x ϕ 16	1320
2240	2240	2320	2365	24 x ϕ 16	1320

Selection Software

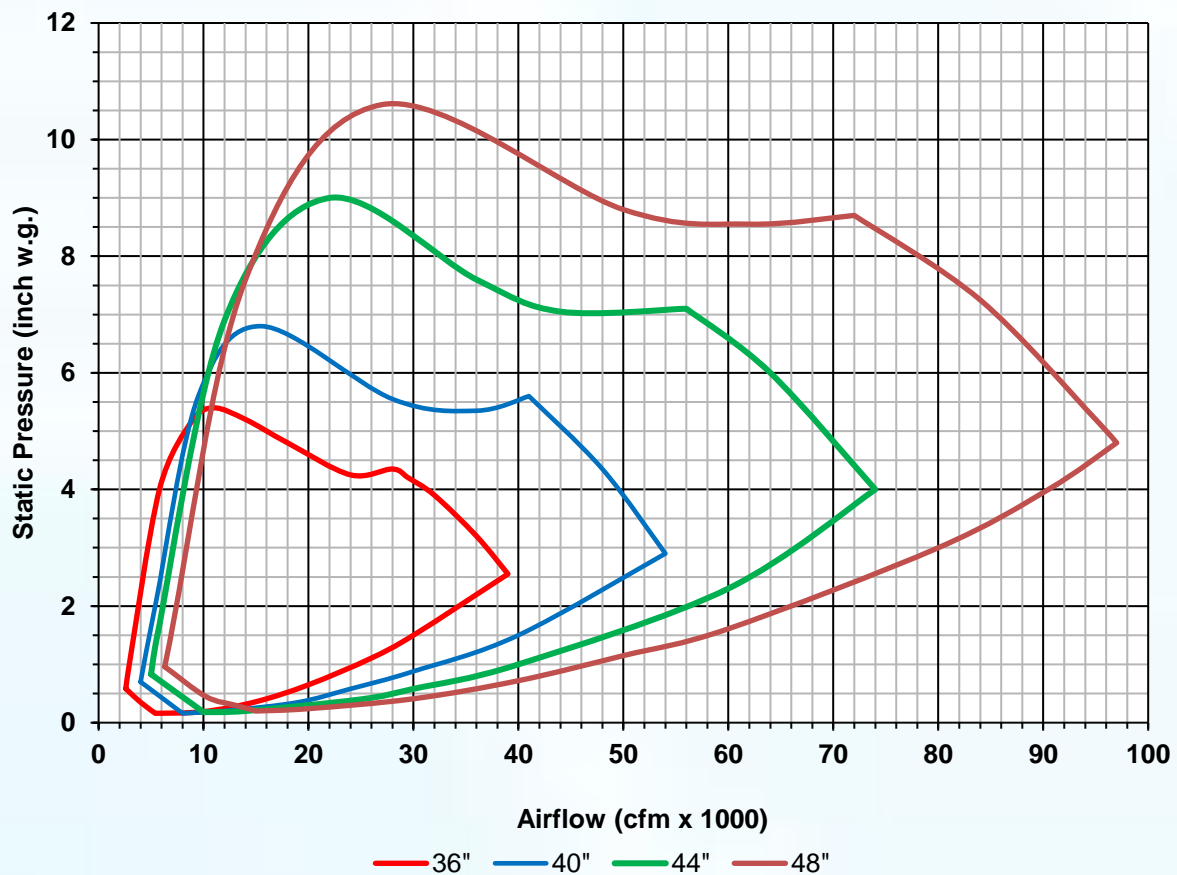
Our selection software can optimize the fan performance based on many factors and the specific application in the field.



Axial fans: from 900mm to 1250mm

Typical application:

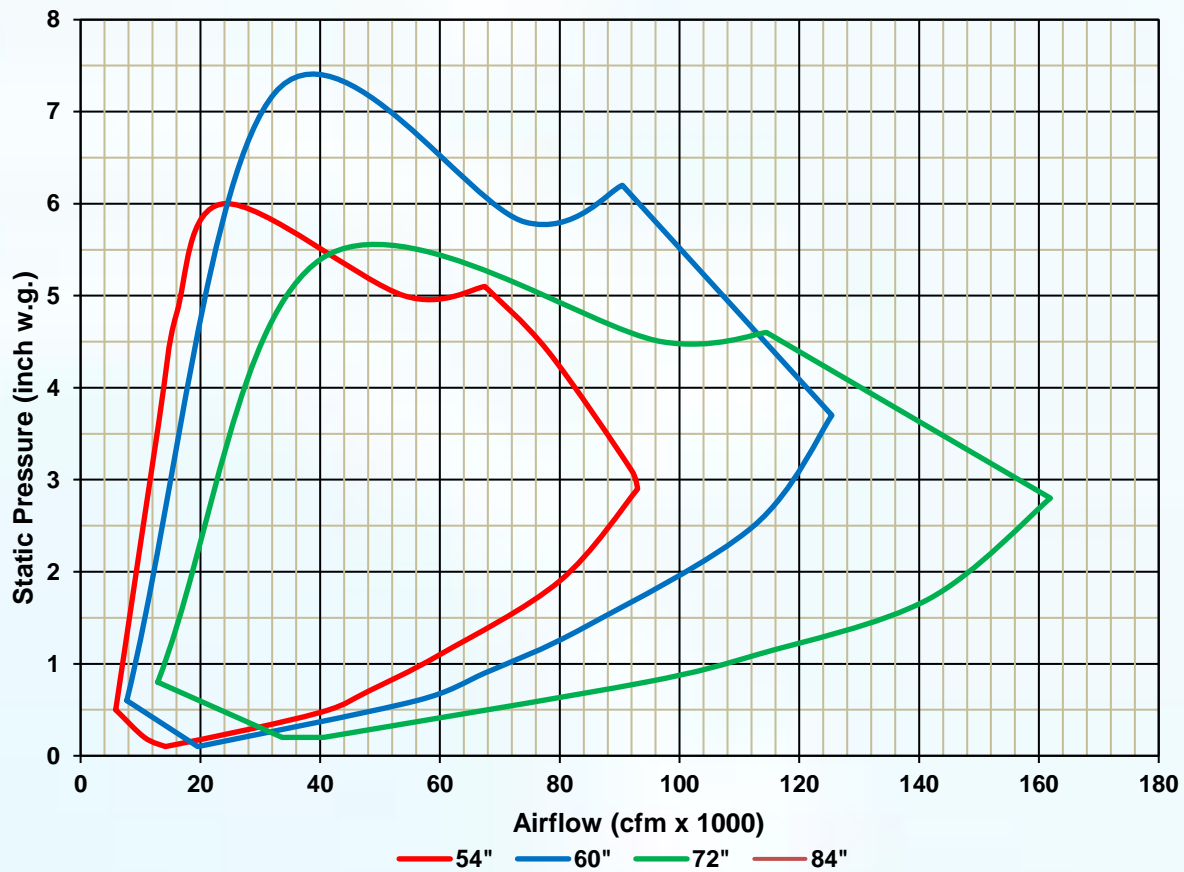
- Cooling tower
- Marine & offshore
- Industrial process



Axial fans: from 1400mm to 2200mm

Typical application:

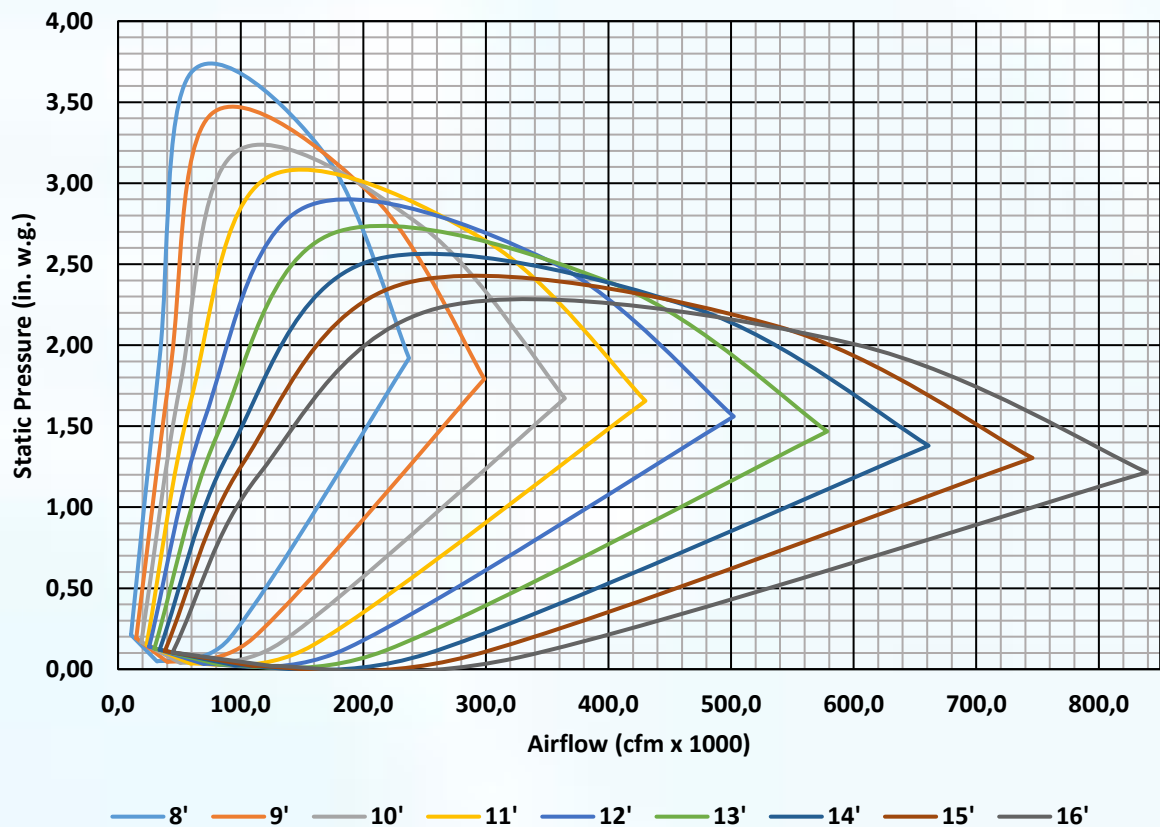
- Cooling tower
- Air cooled heat exchanger
- Radiator and diesel motor
- Cement plant
- Power generation plant
- Marine engine room ventilation



Axial fans: from 2450 to 4900mm

Typical application:

- Cooling tower
- Air cooled heat exchanger



COMEFRI, Worldwide

